

NOTES:

TOPOGRAPHIC CONTOUR INTERVALS ARE 20 FEET. DATUM IS MEAN SEA LEVEL ELEVATION.

THE AERIAL CONTOURS ILLUSTRATE THE HEIGHT LIMITATIONS WITHIN EACH ZONE.

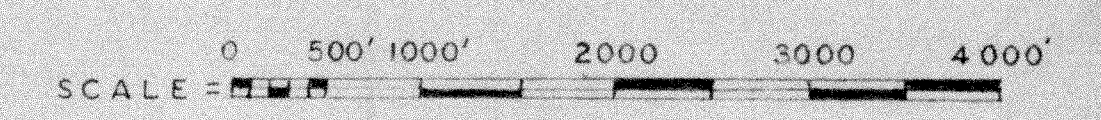
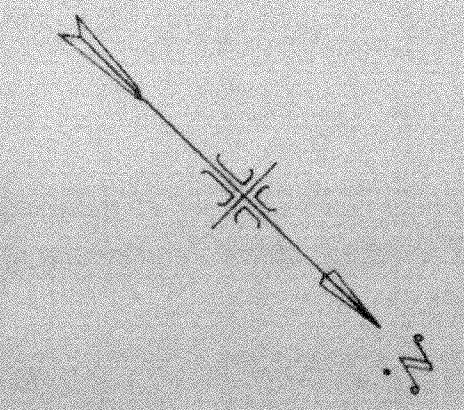
A SLOPE, SUCH AS 40:1, EXPRESSES THE HORIZONTAL DISTANCE OF 40 FEET TO THE VERTICAL DISTANCE OF 1 FOOT.

EXISTING TOPOGRAPHIC SYMBOLS ARE THOSE USED BY THE U.S. GEOLOGICAL SURVEY.

IN THOSE AREAS WHERE EXISTING TERRAIN OR TREES PENETRATE ONE OR MORE OF THE IMAGINARY SURFACES THE HEIGHT OF STRUCTURES SHALL BE RESTRICTED ONLY TO THE HEIGHT OF THE TREE CANOPY WHICH PROVIDES A NATURAL SHIELD TO THE STRUCTURE.

LEGEND

- ULTIMATE RUNWAY
- ZONE BOUNDARY
- TOPOGRAPHIC CONTOURS
- AERIAL CONTOURS
- SECTION LINES



HOUSTON COUNTY AIRPORT ZONING PLAN
CALEDONIA MINNESOTA

STATE AIRPORT ZONING BOARD

APPROVAL _____	DATE _____
APPROVAL _____	DATE _____
APPROVAL _____	DATE _____

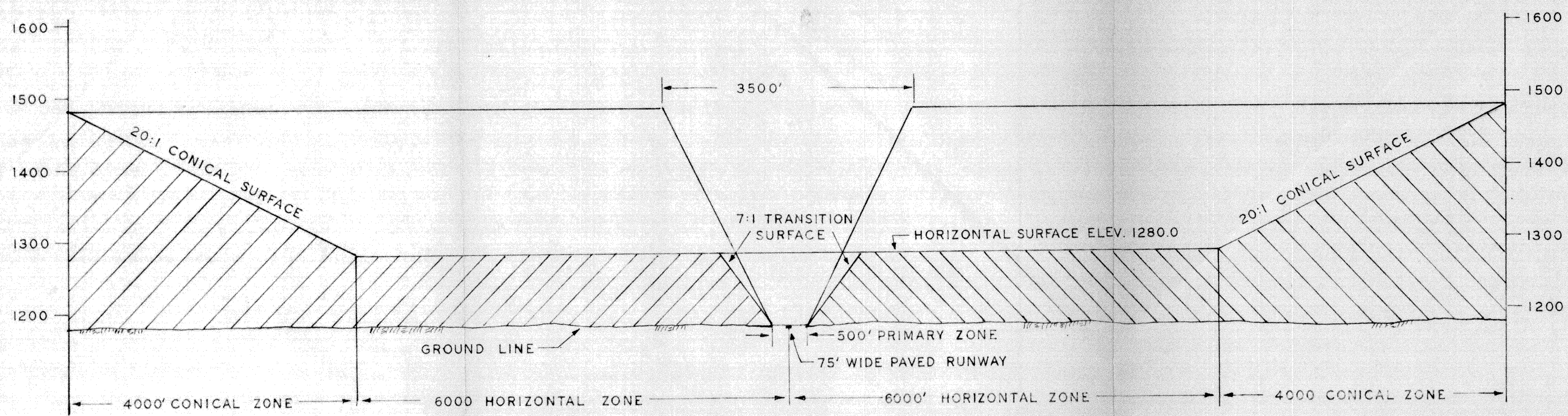
REVISIONS		
NO	DESCRIPTION	DATE

I HEREBY CERTIFY THAT THIS PLAN WAS PREPARED BY ME OR UNDER MY DIRECT SUPERVISION AND THAT I AM A DULY REGISTERED ENGINEER UNDER THE LAWS OF THE STATE OF MINNESOTA

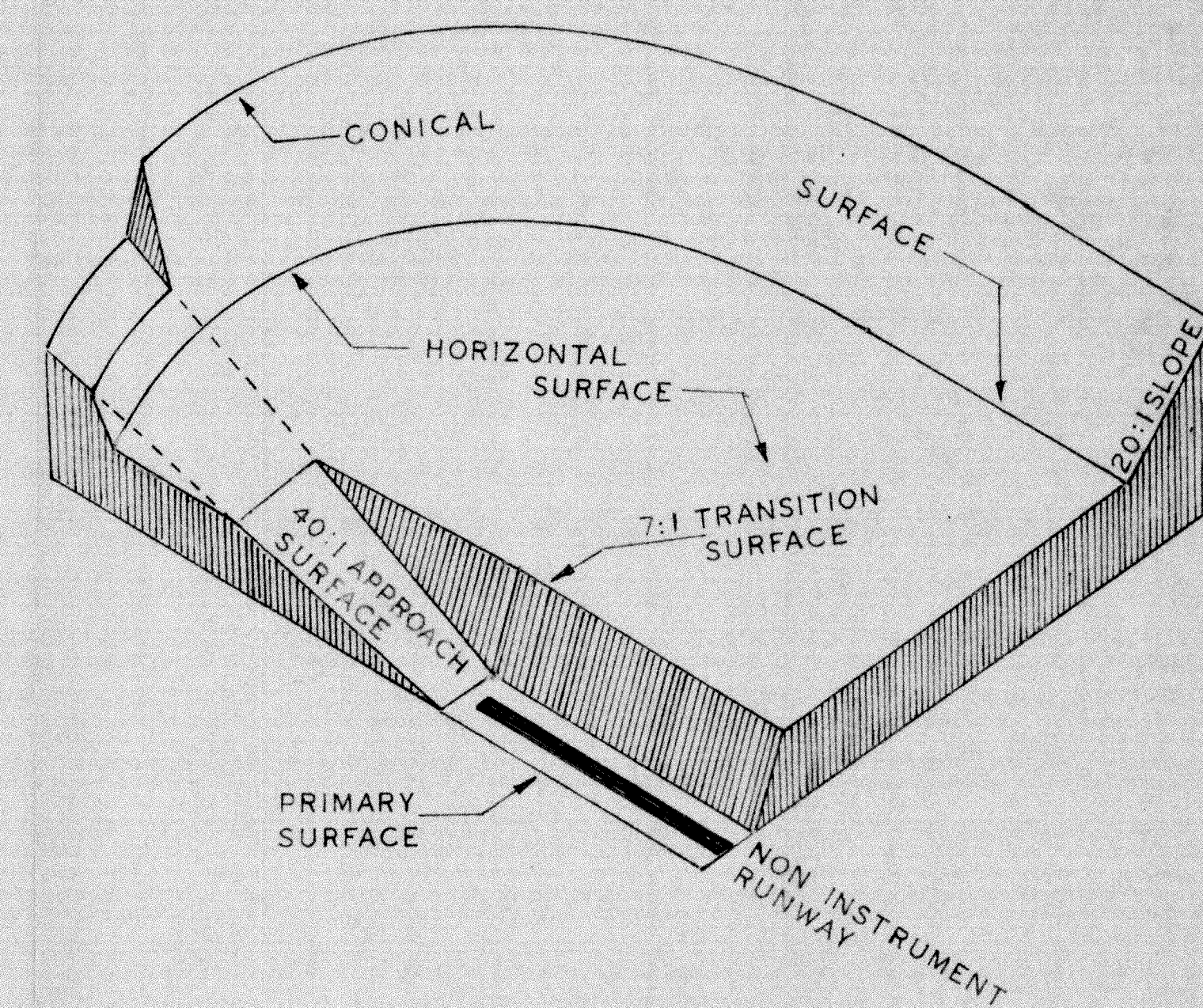
NAME Chuck Secher

DATE 5-12-77 REG. NO. 7071

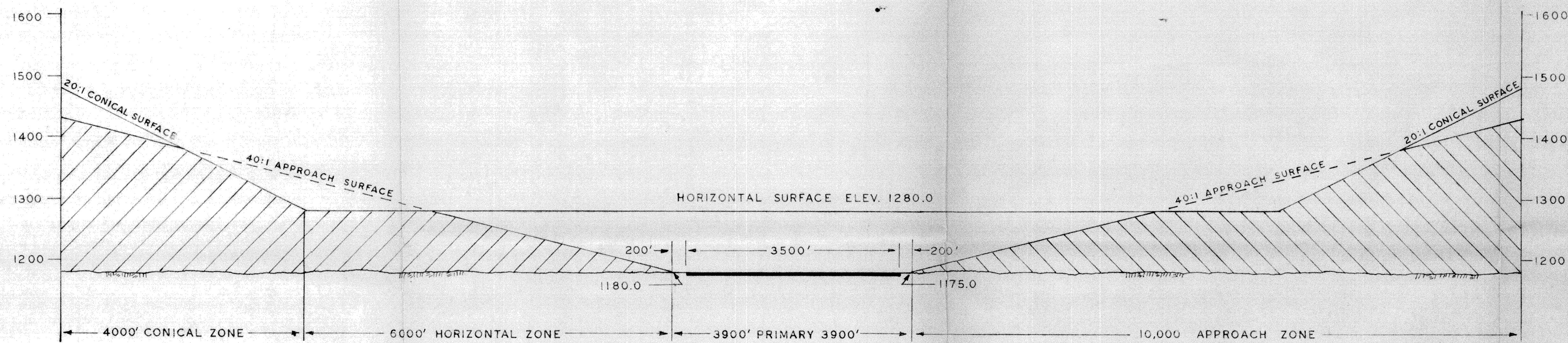
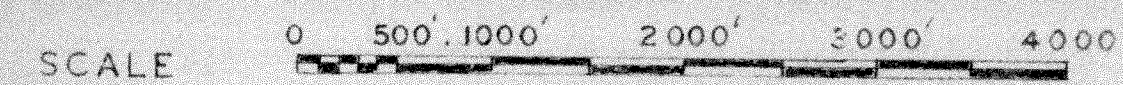
AIRSPACE ZONING PLAN



SECTION B-B

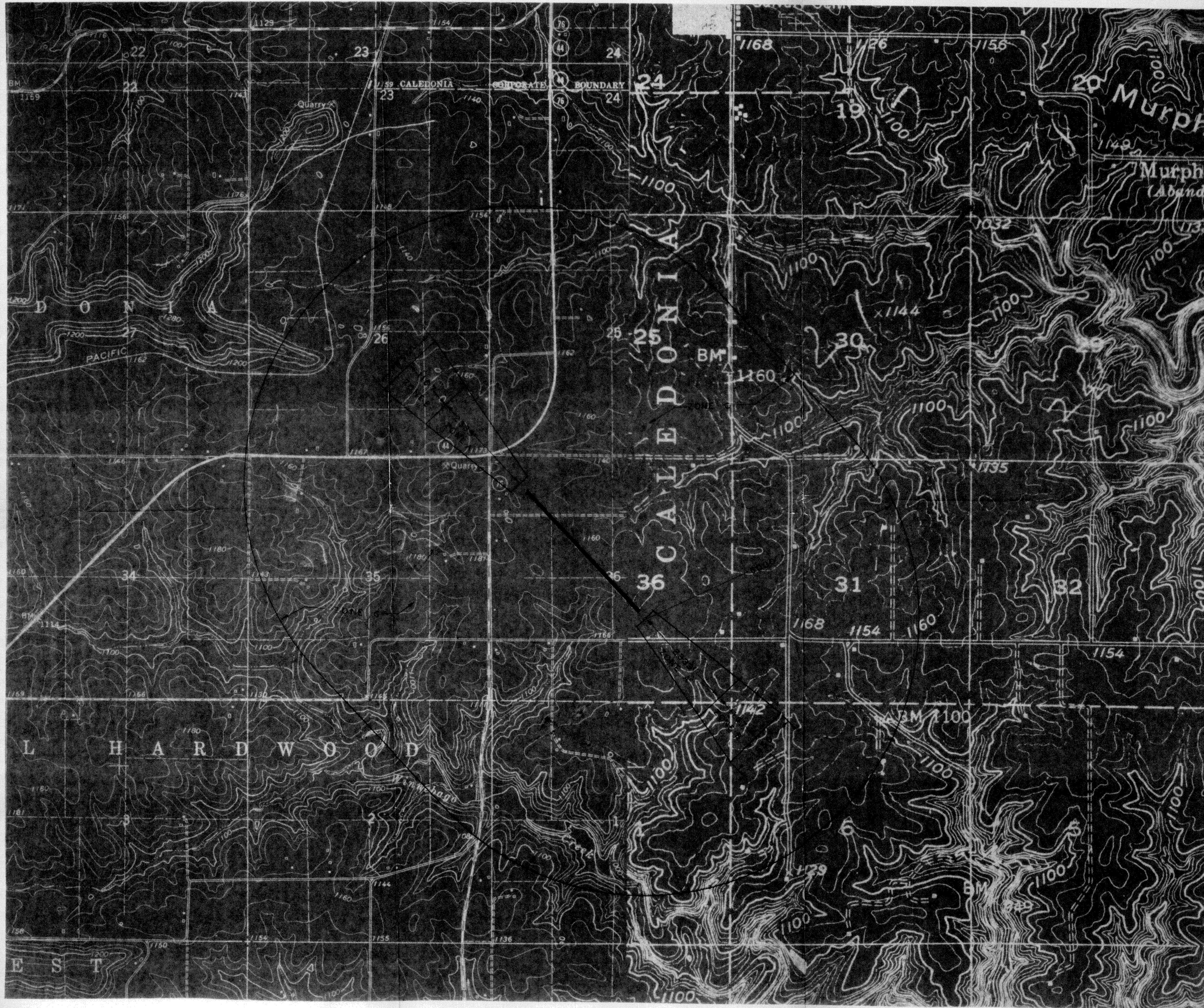


PERSPECTIVE VIEW SHOWING
IMAGINARY SURFACES
NO SCALE




SECTION A-A


HOUSTON COUNTY AIRPORT
ZONING PLAN
AIRSPACE SECTIONS

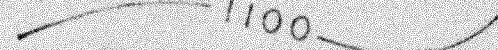




NOTES:
 TOPOGRAPHIC CONTOUR INTERVALS ARE 20 FEET.
 DATUM IS MEAN SEA LEVEL ELEVATION
 EXISTING TOPOGRAPHIC SYMBOLS ARE THOSE
 USED BY THE U.S. GEOLOGICAL SURVEY.

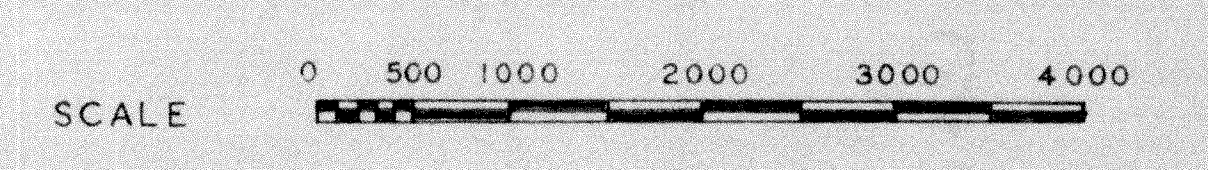
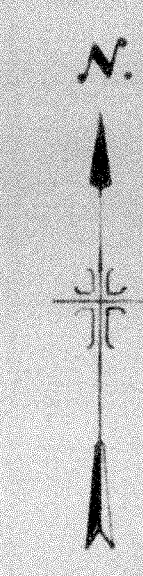
LEGEND

ULTIMATE RUNWAY 

ZONE BOUNDARY 

TOPOGRAPHIC CONTOURS 

SECTION LINES  OR 



HOUSTON COUNTY AIRPORT
 ZONING PLAN

LAND USE ZONING PLAN